



# 672

EN 14700 T Fe13

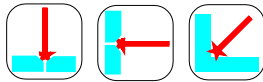
## DESCRIPTION

Meltolit 672 is a seamless metal cored wire for gas shielded metal arc hardfacing. Can also be used as OA in certain condition (slight weaving technique).

The deposit contains boron carbides which give very good abrasion resistance combined with moderate impact resistance. Recommended for single layer applications. 672 is used for hardfacing components undergoing wear by earth, sand and abrasives in agriculture, quarrying, mining and public works applications.

Examples: Mixer shafts, impellers, buckets, shovels, transport screws and crushers for the cement industry.

### WELDING POSITIONS



### CURRENT TYPE

DC(+)

### GAS

M20, M12 (Self shielded)

## MECHANICAL PROPERTIES

### Hardness

60-65 HRC

## TYPICAL CHEMICAL COMPOSITION(%)

C	Si	Mn	Ni	B	Fe
0,5	0,2	1,0	1,4	4,8	Rest

## PACKING INFORMATION AND WELDING PARAMETERS

Dimension(mm)	1,2	1,6
Spool(kg)	15	15